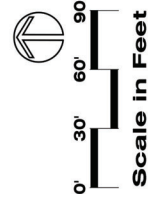
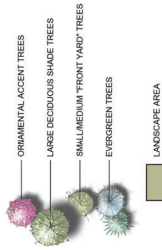


Exhibit C - Preliminary Landscape Plan



PLANT LEGEND



LANDSCAPE DATA

SITE AREA = 16,654 SQ FT (2.25 ACRES)
 JURISDICTION: CITY OF CHICAGO
 APN: 202-003-01
 ZONING: MFH (MULTI-FAMILY - 14 UNITS PER ACRE)
 REQUIRED LANDSCAPE AREA = 19,611 SQ FT (20% OF TOTAL SITE AREA)
 PROVIDED LANDSCAPE AREA = 19,611 SQ FT MIN.
 REQUIRED TREES = 45 MIN. (1 TREE PER 300 SQ FT OF REQUIRED LANDSCAPE AREA)
 REQUIRED SHRUBS = 300 MIN. (6 SHRUBS PER REQUIRED TREE)

GENERAL NOTES

- 1) ALL PLANTING AND IRRIGATION SHALL BE INSTALLED PER LOCAL GOVERNING CODES.
- 2) TREES
DECIDUOUS TREES SHALL HAVE A MINIMUM CALIPER OF 2 INCHES.
EVERGREEN TREES SHALL HAVE A MINIMUM HEIGHT OF 6 FEET.
• TREES BEYOND THOSE REQUIRED BY CODE, MAY BE REDUCED IN SIZE AT
• INSTALLATION.
- 3) FINAL PLANT SELECTION AND LAYOUT WILL BE BASED ON SOUND HORTICULTURAL PRACTICES RELATING TO MICROCLIMATE, SOIL, AND WATER REGIMES. ALL TREES WILL BE PLANTED WITHIN THE SPECIFIED PLANTING AREA. PLANTING AREA SHALL BE THE SIZE AND QUALITY AT TIME OF PLANTING WILL BE PER THE AMERICAN STANDARD FOR NURSERY STOCK (ANSI Z60.1-1990).
- 4) ALL SHRUB BEDS WILL RECEIVE A 4" DEPTH MULCH WITH WEED CONTROL.
- 5) ALL LANDSCAPING WILL BE AUTOMATICALLY IRRIGATED. CONTAINER PLANTINGS WILL BE DRIP IRRIGATED BASED ON THE SPECIFIC HORTICULTURAL REQUIREMENTS OF EACH SPECIES. A REDUCED-PRESSURE-TYPE BACKFLOW PREVENTER WILL BE PROVIDED ON THE IRRIGATION SYSTEM AS REQUIRED PER CODE.
- 6) PLAN IS CONCEPTUAL. PLANT QUANTITIES INDICATED ARE PER CITY OF RENO CODE REQUIREMENTS. PLANT LOCATIONS, FINAL SPECIES SELECTION, AND SIZE AT PLANTING WILL BE DETERMINED DURING DEVELOPMENT OF THE FINAL CONSTRUCTION DOCUMENTS.